



**FILON<sup>®</sup>**  
**ON**  
**YOUR**  
**SIDE**

**PRODUCT**  
OVERVIEW

Your trusted partner for GRP construction products.

## INTRODUCTION

# MAKING A DURABLE DIFFERENCE

## WHY FILON?

**At Filon, we go above and beyond for our customers' needs.**

We are flexible, adaptable and agile, always ready to find a **practical solution** rather than say no.

Our relationships are built on **trust, reliability and honesty**, values that have guided us for decades.

Our GRP rooflights and sheets are a proven way to add light and strength to any project and can be shaped to a vast range of profiles. Beyond this, all of our products are brilliantly resilient **with a solution to suit almost every situation.**



**UK**  
SUPPORT

Flexible, adaptive  
and agile

**1500+**  
PROFILES

Made to match current  
and discontinued profiles

**60+**  
YEARS

UK manufacturing  
experience

---

# A BRIGHTER WAY

Natural light changes everything. It shapes how people feel, how spaces are used and how well a building performs. Rooflights are the most effective way to bring daylight into large span buildings, creating safer, more efficient and more enjoyable places to work.



---

# LIGHT THAT IMPROVES LIVES

There is substantial proof that 'daylighting' a space supports alertness, concentration and wellbeing. It helps people maintain healthy sleep cycles and reduces fatigue. People working in well daylighted space also feel better, think clearer and work more productively in naturally lit environments. These benefits often lead to greater staff retention and improved performance.

---

# CUTTING ENERGY USE

Daylighting from above is good for a business's bottom line. A well designed rooflight system can provide high light levels for most of the working day, reducing the need for artificial lighting. For example, a building with only 12 percent rooflight area in its roof can achieve more than 300lx for 77 percent of daylight hours.

This essentially means that the space stays bright for most of the working day, allowing lights to be dimmed or switched off for long periods, reducing energy use and running costs.



# CORE RANGE: ROOFLIGHTS & SHEETS

## SINGLE-SKIN GRP ROOFLIGHTS AND SHEETS

Highly translucent GRP with even light diffusion and a UV-absorbing surface layer.

Available in over 1500 profiles to match current metal sheets and most discontinued metal or asbestos-cement profiles. Plus, if your project's profile isn't one we currently offer, speak to us and we'll do our best to manufacture it for you.

## MULTIWALL POLYCARBONATE INTERMEDIATE CORE PANEL

Used as an insulating layer within GRP rooflight assemblies to improve thermal performance.

**4mm twinwall** and **10mm four-wall** polycarbonate panels are available for use within twin-skin, site-assembled or factory-assembled rooflights.

These cores provide U-values down to **0.87W/m<sup>2</sup>K**, depending on the configuration.

## FACTORY-ASSEMBLED INSULATED ROOFLIGHTS (FAIRS)

Filon FAIRs are designed for use with all common composite roof panel types and can also be produced to suit non-composite twin-skin systems. They provide high levels of natural light and are available as double or triple-skin units with a choice of insulating cores.

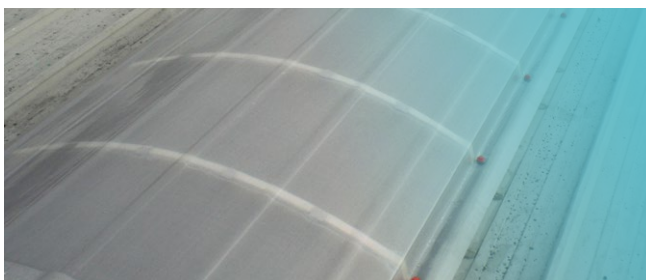
- **Compatible with modern and legacy systems, allowing straightforward installation on both new build and refurbishment projects.**
- **Manufactured in controlled factory conditions for consistent quality, weather-tightness and light transmission.**
- **Available in a range of weather-sheet weights to achieve specific non-fragility and roof-safety requirements.**



## MONARCH-F BARREL VAULT ROOFLIGHTS

Factory-assembled GRP rooflights for standing-seam, secret-fix, ridge and low-pitch roofs.

Available in double or triple-skin formats with insulation options to meet specified U-values.



## REINFORCED RANGE

**Supasafe:** triple-reinforced sheet with impact resistance comparable with 0.7mm profiled steel sheet.

**DR24 and DR30:** double-reinforced grades for extra durability while remaining lightweight.



# OVER-ROOFING & REFURBISHMENT

## OVER-ROOFING SYSTEM

---

Our over-roofing system is a slimline and very lightweight GRP, from approximately **2.4kg/m<sup>2</sup>**.

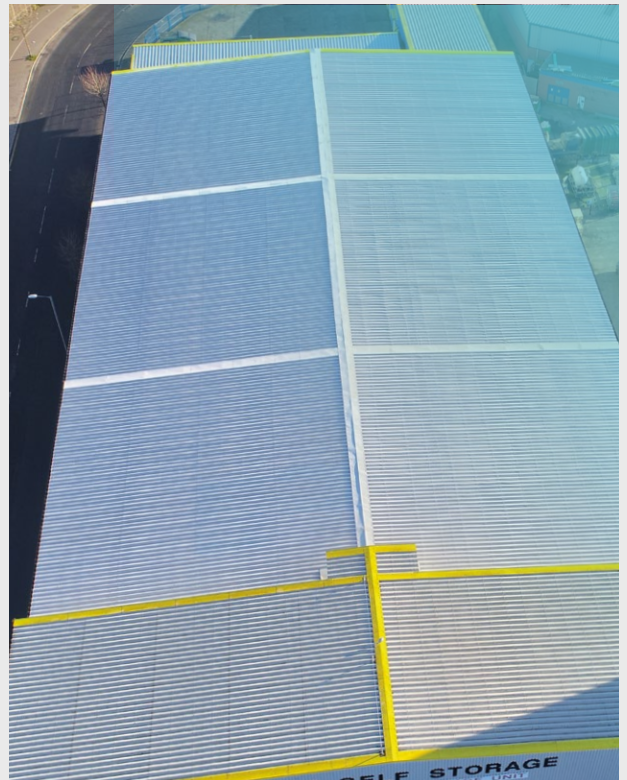
It is designed to simply and efficiently overlay existing asbestos-cement roofs using our **unique Profix spacer**.

The major benefit of this system is its exceptionally low weight. Once the new GRP system has been fitted and the original asbestos-cement roof has dried out, the total roof weight can be **lower than before installation**.

This often removes the need for costly structural calculations to confirm the building's suitability.

As the original roof sheets are left in place, there is **minimal disruption for the building occupier** and **no asbestos-sheet disposal cost**.

The result is a fast, economical and proven way to extend roof life and improve performance without removing the existing structure.



## DR-REFURB SHEETS

---

Opaque GRP sheets designed to **replace or overlay damaged asbestos-cement roofing**.

Manufactured to match most current and obsolete steel or asbestos-cement profiles, providing a practical solution for roof repair projects.



# SPECIALIST APPLICATIONS & SAFETY

## ISOFIL SHEETS

---

Formulated for continuous immersion in water-treatment and waste-processing environments.

The sheets are designed to maintain performance under long-term immersion and across a wide temperature range **up to 120°C**.



### V-FLOW VALLEY TROUGHS

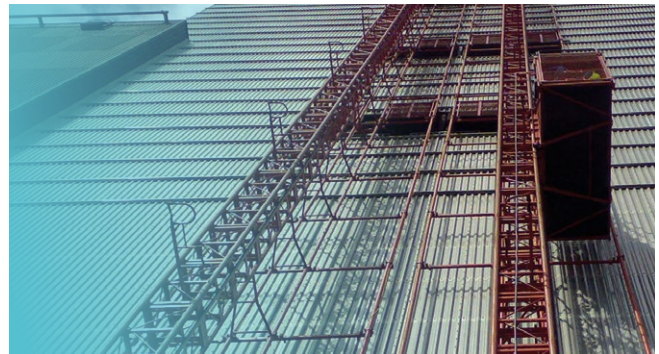
---

Durable GRP valleys for slate and tile roofs.

Quick to install, no scrap value so there is no risk of theft, and a proven 30-plus-year life expectancy.

Light, easy to transport and handle, and require minimal maintenance.

Quality-assured to **ISO 9001 and BBA certified**.



## CITADEL SHEETS FOR HARSH ENVIRONMENTS

---

GRP sheets formulated for use in aggressive or corrosive conditions such as chemical plants, galvanising facilities and coastal sites where steel may degrade.

## FILITE INTERNAL BOX ROOFLIGHTS

---

Laylights for suspended ceilings and insulation grid systems.

## FIXSAFE SYSTEM

---

Our unique Fixsafe system enables profiled rooflights and roof sheets to be replaced safely from inside the building, eliminating the need for operatives to step onto fragile roof areas.

By working entirely from below, Fixsafe removes the requirement for edge protection, scaffolding, roof staging or safety nets, greatly reducing risk and disruption.

This approach provides a practical and economical method for safely replacing failing rooflights or sheets while maintaining normal building operations.

Fixsafe has been used successfully on numerous refurbishment projects as a reliable way to improve site safety and minimise downtime.

More detailed information, including installation guidance and competence requirements, can be found in our dedicated Fixsafe brochure.



THE **FILON WAY**

# WE GO ABOVE AND BEYOND.



We have been producing high-quality GRP rooflighting and roofing systems **since the 1950s.**

Our manufacturing hub in Burntwood, Staffordshire carries **ISO 14001 environmental certification** and **our whole company is ISO 9001 certified.**

Every Filon rooflight, sheet and valley trough is made by a team that takes **pride in its work and understands the pressures on yours.**

## OUR 'ON YOUR SIDE' APPROACH:

### ON TIME

Delivering when it matters with fair lead times and technical advice that saves time. All with a flexible approach and can-do attitude to meet your needs wherever possible.

### ON SPEC

Products that meet every detail. Designed and tested for long-term service, with traceable evidence behind every claim.

### ON POINT

Expertise that solves problems fast, with over 60 years of UK manufacturing and continuous improvement behind us.

## ASSOCIATIONS

Filon is an **active member of a number of recognised trade and industry bodies** that promote best practice, safety and quality across the construction sector:



THE ROOFLIGHT ASSOCIATION

**The Rooflight Association (RA)**



LEADING ROOFING EXCELLENCE

**National Federation of Roofing Contractors (NFRC)**



**Liquid Roofing & Waterproofing Association (LRWA)**



Rural & Industrial Design & Building Association

**Rural & Industrial Design & Building Association (RIDBA)**



**Composites UK Trade Association**



**Metal Cladding & Roofing Manufacturers Association (MCRMA)**



**The NBS (The National Building Specification)**

**These memberships reflect Filon's commitment to product integrity, industry collaboration and continuous improvement.**

# FILON®

## CONTACT US

Filon Products Ltd  
Unit 3 Ring Road, Zone 2,  
Burntwood Business Park  
Burntwood, Staffordshire  
WS7 3JQ, UK

**Tel:** +44 (0)1543 687300

**Email:** [sales@filon.co.uk](mailto:sales@filon.co.uk)

**[www.filon.co.uk](http://www.filon.co.uk)**

Disclaimer: Information is provided in good faith and may change as product data and standards are updated. Always refer to the latest version on our website.