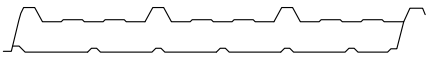
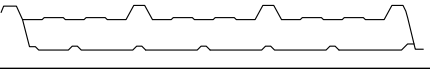
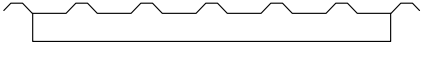


# FACTORY ASSEMBLED INSULATED ROOFLIGHT ORDER FORM

## MK3 & MK2 UNITS

# FILON<sup>®</sup>

# ON YOUR SIDE

Customer Name		Order Number	
Order Date		Date Required	
Delivery Address		Comments / Special Instructions / Markings	
Site Contact			
Mk3 Units Right to Left Lay - Viewed from Eaves		Profile	
	Qty:		
Mk3 Units Left to Right Lay - Viewed from Eaves		Box Depth	
	Qty:		
Mk2 Units - Overlap Both Sides:		Application	Tick
	Qty:	Roof:	
		Wall (See note 6 & 7):	

Fire Performance			
Outer Sheet	Tick	Liner	Tick
Grade 300 *standard specification		Grade 104 *standard specification	
Grade 104		Grade 101	
Grade 101			

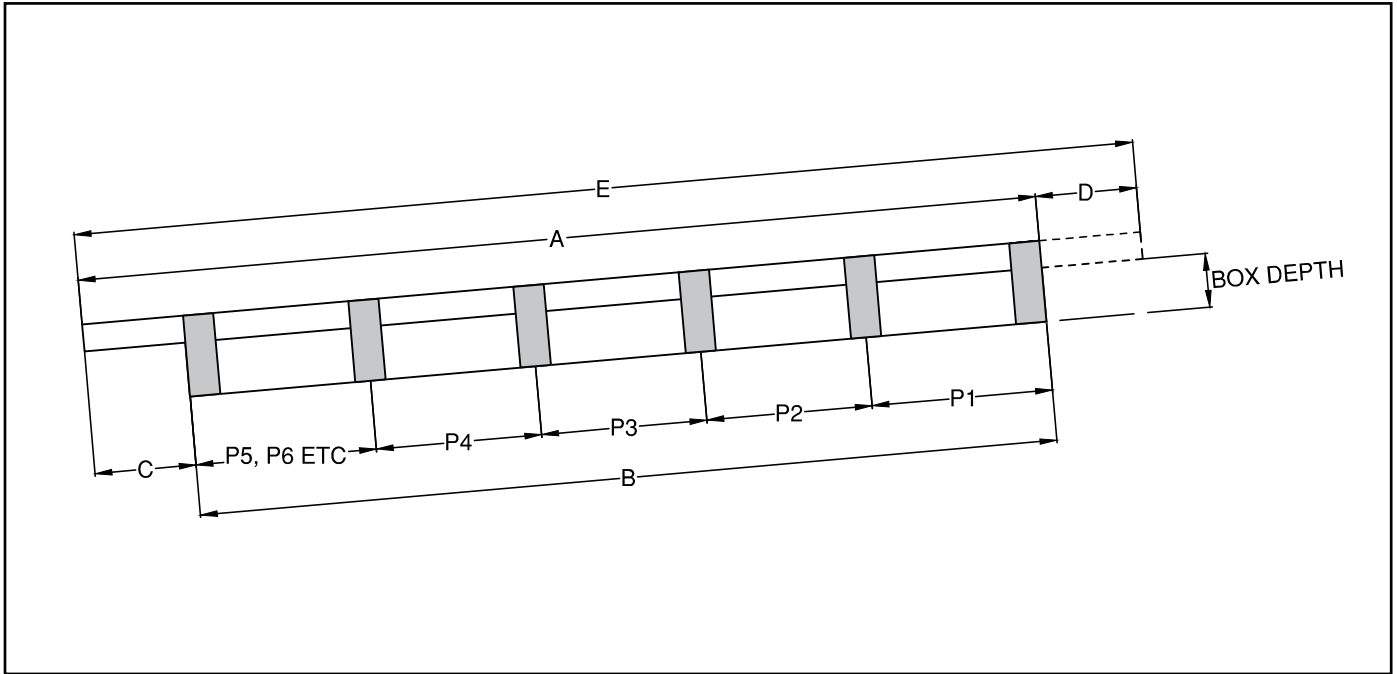
Notes	
1. Due to manufacturing tolerances, we do not recommend more than three FAIR units are fitted in a continuous run.	require a starter and finishing unit. Please contact Filon for further details.
2. Maximum FAIR unit length is 8.5m.	6. Film core is not suitable for FAIRs in wall applications.
3. Mk3 & Mk2 FAIR units come with 50mm wide filler blocks as standard, wider blocks available at an additional cost.	7. FAIRs are not suitable for use in wall applications for new builds in England, if complying to Part B - Fire Safety of the Building Regulations. Please refer to TIS003 for more information.
4. Mk3 FAIR units to suit composite panels are fitted with a metal side lap strip as standard. Mk2 units are not.	8. Please refer to TIS104 for more information.
5. Mk2 FAIR units that are in a pair or continuous run may	

Outer Sheet Weight	Expected Non-Fragility Period	Support Centres	Tick
CE24E	When New	Up to 2m	
CE30E	25 Years	Up to 2m	
CEDR24E	25 Years	Up to 2m	
CE36E	25 Years	Up to 2.25m	
CEDR30E	25 Years	Up to 2.25m	
SUPASAFE	30 Years	Up to 2.5m	

U-Value	Tick
Double Skin - 3.22 W/(m <sup>2</sup> K) - Not part L compliant	
Film Core - 2.12 W/(m <sup>2</sup> K)	
4mm Polycarbonate - 1.71 W/(m <sup>2</sup> K)	
10mm Polycarbonate - 1.37 W/(m <sup>2</sup> K)	
2 x 4mm Polycarbonate (Spaced) - 1.17 W/(m <sup>2</sup> K)	
4mm & 10mm Polycarbonate (Spaced) - 1.00 W/(m <sup>2</sup> K)	
2 x 10mm Polycarbonate - 0.87 W/(m <sup>2</sup> K)	

**FACTORY ASSEMBLED INSULATED ROOFLIGHT ORDER FORM**  
**MK3 & MK2 UNITS**

**FILON<sup>®</sup>**  
**ON YOUR SIDE**



\*All Dimensions in mm

Filler Position Dimensions									
P1:	P2:	P3:	P4:	P5:	P6:	P7:	P8:	P9:	P10:
Please tick below if an additional filler is required for the above position									
<b>Dimension A:</b> (Top Sheet Length)		<b>Dimension B:</b> (Liner Length)		<b>Dimension C:</b> (Downslope Cutback)		<b>Dimension D:</b> (Upslope Cutback if required)		<b>Dimension E:</b> (Length with Upslope Cutback)	

**FILON<sup>®</sup>**

**FILON<sup>®</sup> Products Limited**  
 Unit 3 Ring Road, Zone 2, Burntwood Business Park,  
 Burntwood, Staffordshire, England WS7 3JQ

Tel: +44 (0)1543 687300 Email: sales@filon.co.uk

**WWW.FILON.CO.UK**

©**FILON Products Ltd** own the copyright of this document which is supplied in confidence and which must not be used for any other purpose than that which it is supplied. It must not be reproduced without permission from the Company.  
 R3-07 Issue 5 03/2026