

## Filon Products Ltd

Unit 3  
Ring Road, Zone 2  
Burntwood Business Park  
Burntwood  
Staffordshire WS7 3JQ

Tel: 01543 687300

e-mail: sales@filon.co.uk

website: www.filon.co.uk



**Agrément Certificate**

**07/4492**

Product Sheet 8 Issue 4

### FILON V-FLOW GRP VALLEY TROUGH AND FLASHINGS RANGE

#### FILON GRP DRY FIX BONDING STRIPS (GDFBS 70, GDFBS 110 AND GDFBSUB 70 AND 100)

This Agrément Certificate Product Sheet<sup>(1)</sup> relates to Filon Dry Fix Bonding Strips (GDFBS 70, GDFBS 110 and GDFBSUB 70 and 100) for use in slated or tiled pitched roofs constructed in accordance with the relevant requirements of BS 5534 : 2014. The products provide a weatherproof junction where there are changes in direction or material in a slated or tiled roof structure.

(1) Hereinafter referred to as 'Certificate'.

#### The assessment includes

##### Product factors:

- compliance with Building Regulations
- compliance with additional regulatory or non-regulatory information where applicable
- evaluation against technical specifications
- assessment criteria and technical investigations
- uses and design considerations

##### Process factors:

- compliance with Scheme requirements
- installation, delivery, handling and storage
- production and quality controls
- maintenance and repair

##### Ongoing contractual Scheme elements†:

- regular assessment of production
- formal 3-yearly review

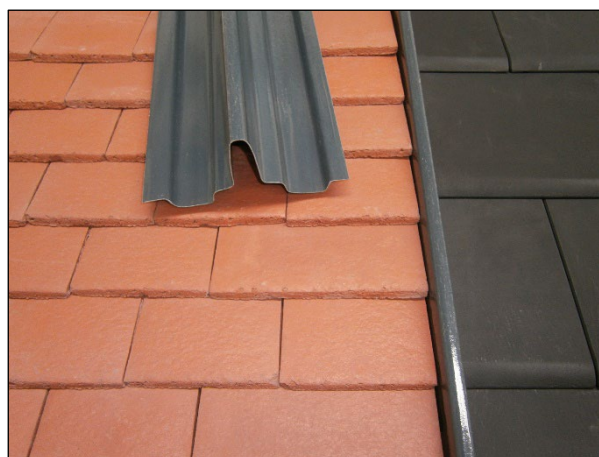
The BBA has awarded this Certificate to the company named above for the products described herein. Those products have been assessed by the BBA as being fit for their intended use provided they are installed, used and maintained as set out in this Certificate.

On behalf of the British Board of Agrément

Date of Fourth issue: 24 July 2024

Originally certified on 22 October 2014

*Certificate amended on 11 December 2024 to revise section 2 and associated Building Regulations.*



#### KEY FACTORS ASSESSED

- Section 1. Mechanical resistance and stability
- Section 2. Safety in case of fire
- Section 3. Hygiene, health and the environment
- Section 4. Safety and accessibility in use
- Section 5. Protection against noise
- Section 6. Energy economy and heat retention
- Section 7. Sustainable use of natural resources
- Section 8. Durability

A handwritten signature in black ink, appearing to read 'Hardy Giesler'.

Hardy Giesler  
Chief Executive Officer

*This BBA Agrément Certificate is issued under the BBA's Inspection Body accreditation to ISO/IEC 17020. Sections marked with † are not issued under accreditation.*

*The BBA is a UKAS accredited Inspection Body (No. 4345), Certification Body (No. 0113) and Testing Laboratory (No. 0357).*

*Readers MUST check that this is the latest issue of this Agrément Certificate by either referring to the BBA website or contacting the BBA directly.*

*The Certificate should be read in full as it may be misleading to read clauses in isolation.*

*Any photographs are for illustrative purposes only, do not constitute advice and should not be relied upon.*

#### British Board of Agrément

1<sup>st</sup> Floor, Building 3, Hatters Lane  
Croxley Park, Watford  
Herts WD18 8YG

©2024

tel: 01923 665300  
clientservices@bbacerts.co.uk  
www.bbacerts.co.uk

## SUMMARY OF ASSESSMENT AND COMPLIANCE

This section provides a summary of the assessment conclusions; readers should refer to the later sections of this Certificate for information about the assessments carried out.

### Compliance with Regulations

Having assessed the key factors, the opinion of the BBA is that Filon GRP Dry Fix Bonding Strip (GDFBS 70, GDFBS 110 and GDFBSUB 70 and 100), if installed, used and maintained in accordance with this Certificate, can satisfy or contribute to satisfying the relevant requirements of the following Building Regulations:



#### The Building Regulations 2010 (England and Wales) (as amended)

|                     |              |   |
|---------------------|--------------|---|
| <b>Requirement:</b> | <b>B4(2)</b> | <b>External fire spread</b>   |
| Comment:            |              | On a suitable substructure, the use of the products may enable a roof to be unrestricted under this Requirement. See section 2 of this Certificate. |
| <b>Requirement:</b> | <b>C2(b)</b> | <b>Resistance to moisture</b>   |
| Comment:            |              | The products will contribute to satisfying this Requirement. See section 3 of this Certificate.   |
| <b>Regulation:</b>  | <b>7(1)</b>  | <b>Materials and workmanship</b>  |
| Comment:            |              | The products are acceptable. See sections 8 and 9 of this Certificate.  |



#### The Building (Scotland) Regulations 2004 (as amended)

|                    |             |  |
|--------------------|-------------|--|
| <b>Regulation:</b> | <b>8(1)</b> | <b>Fitness and durability of materials and workmanship</b>   |
| Comment:           |             | The use of these products satisfies the requirements of this Regulation. See sections 8 and 9 of this Certificate.   |
| <b>Regulation:</b> | <b>9</b>    | <b>Building standards – construction</b>   |
| Standard:          | 2.8         | Spread from neighbouring buildings   |
| Comment:           |             | When applied to a suitable substructure, the products may enable a roof to be unrestricted under clause 2.8.1 <sup>(1)(2)</sup> of this Standard. See section 2 of this Certificate.   |
| Standard:          | 3.10        | Precipitation  |
| Comment:           |             | The products will contribute to satisfying this Standard, with reference to clauses 3.10.1 <sup>(1)(2)</sup> and 3.10.8 <sup>(1)(2)</sup> . See section 3 of this Certificate.   |
| Standard:          | 7.1(a)      | Statement of sustainability  |
| Comment:           |             | The products can contribute to satisfying the relevant requirements of Regulation 9, Standards 1 to 6, and therefore will contribute to a construction meeting a bronze level of sustainability as defined in this Standard. |
| <b>Regulation:</b> | <b>12</b>   | <b>Building standards – conversion</b>   |
| Comment:           |             | All comments given for the products under Regulation 9, Standards 1 to 6, also apply to this Regulation, with reference to clause 0.12.1 <sup>(1)(2)</sup> and Schedule 6 <sup>(1)(2)</sup> .                                |

(1) Technical Handbook (Domestic).

(2) Technical Handbook (Non-Domestic).



## The Building Regulations (Northern Ireland) 2012 (as amended)

|                    |                    |  |
|--------------------|--------------------|--|
| <b>Regulation:</b> | <b>23(1)(a)(i)</b> | <b>Fitness of materials and workmanship</b>  |
| Comment:           | <b>(iii)(b)(i)</b> | The products are acceptable. See sections 8 and 9 of this Certificate.   |
| <b>Regulation:</b> | <b>28(b)</b>       | <b>Resistance to moisture and weather</b>  |
| Comment:           |                    | The use of the products will enable a roof to satisfy the requirements of this Regulation. See section 3 of this Certificate.                      |
| <b>Regulation:</b> | <b>36(b)</b>       | <b>External fire spread</b>  |
| Comment:           |                    | On a suitable substructure, the use of the products may enable a roof to be unrestricted under this Regulation. See section 2 of this Certificate. |

### Additional Information

#### NHBC Standards 2024

In the opinion of the BBA, Filon GRP Dry Fix Bonding Strips (GDFBS 70/110 and GDFBSUB 70/100), if installed, used and maintained in accordance with this Certificate, can satisfy or contribute to satisfying to relevant requirements in relation to *NHBC Standards*, Chapter 7.2 *Pitched roofs*.

### Fulfilment of Requirements

The BBA has judged Filon GRP Dry Fix Bonding Strips (GDFBS 70/110 and GDFBSUB 70/100) to be satisfactory for use as described in this Certificate. The products have been assessed for use as a weatherproof junction where there are changes in direction or material in a slated or tiled roof structure.

### ASSESSMENT

#### Product description and intended use

The Certificate holder provided the following description for the products under assessment. Filon GRP Dry Fix Bonding Strips (GDFBS 70/110 and GDFBSUB 70/100) are glass fibre reinforced polyester laminates with a UV-resistant polyester film on the upper face (see Figures 1 to 4).

Figure 1 Filon GRP Dry Fix Bonding Strip – GDFBS 70 (for slate roof application)

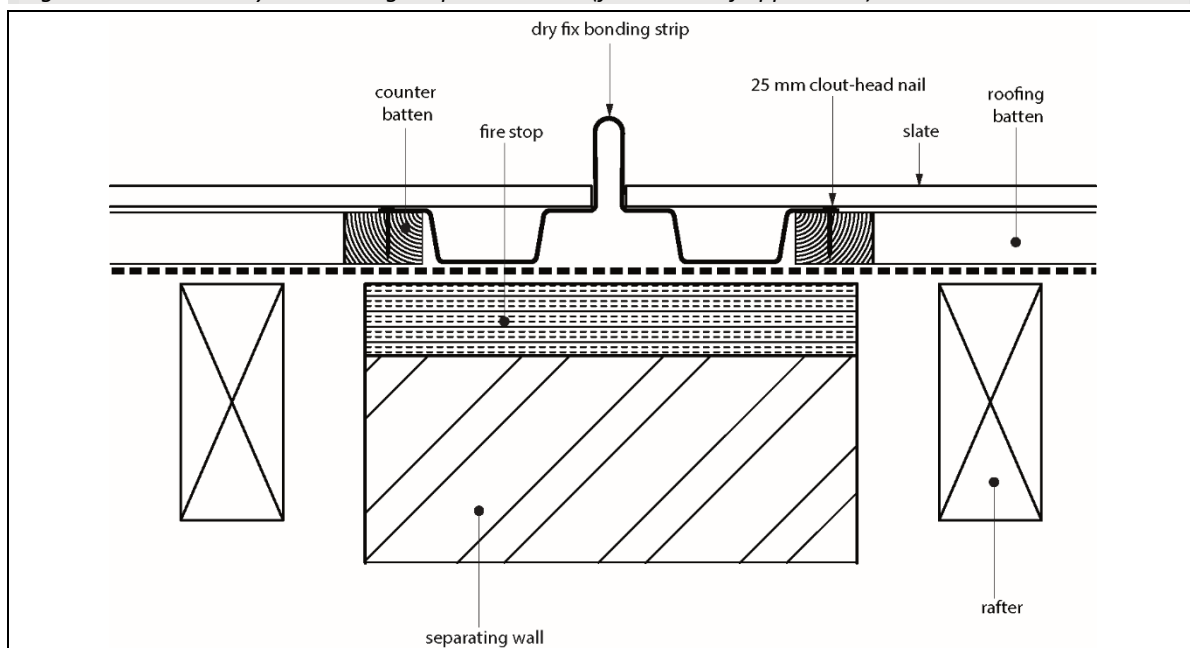


Figure 2 Filon GRP Dry Fix Bonding Strip – GDFBS 110 (for tile roof application)

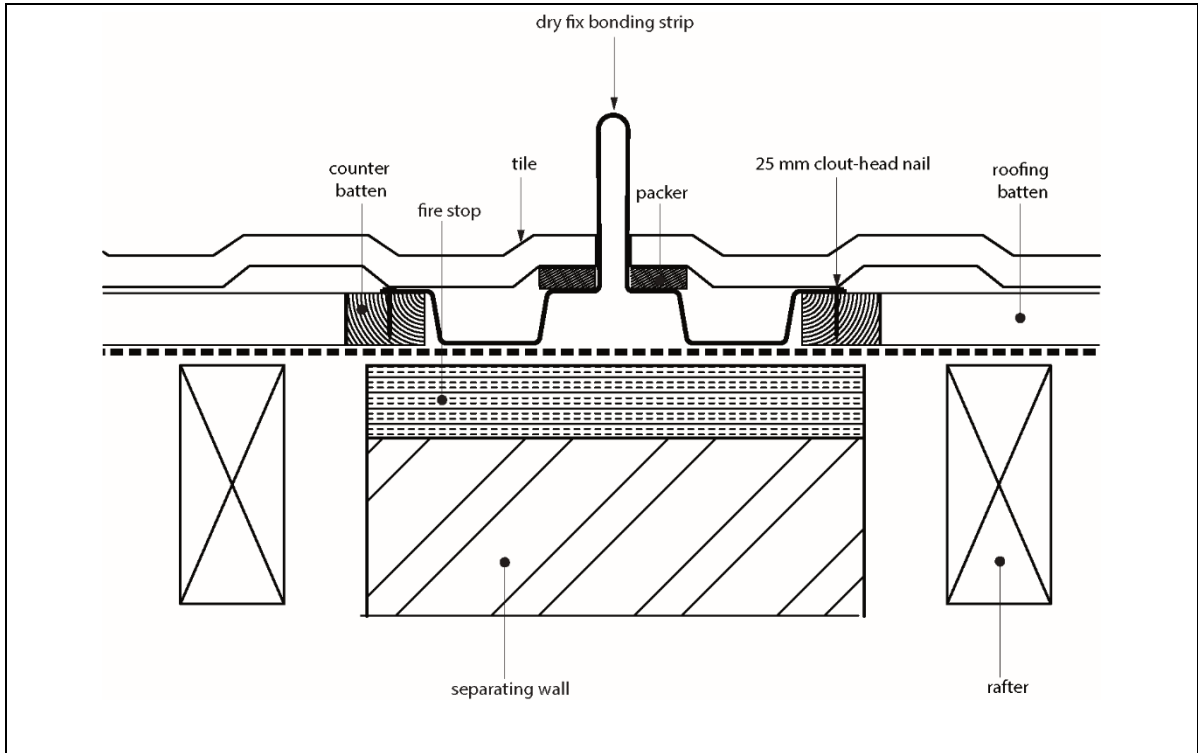


Figure 3 Filon GRP Dry Fix Bonding Strip – GDFBSUB 70 (for adjoining tile/slate roof applications)

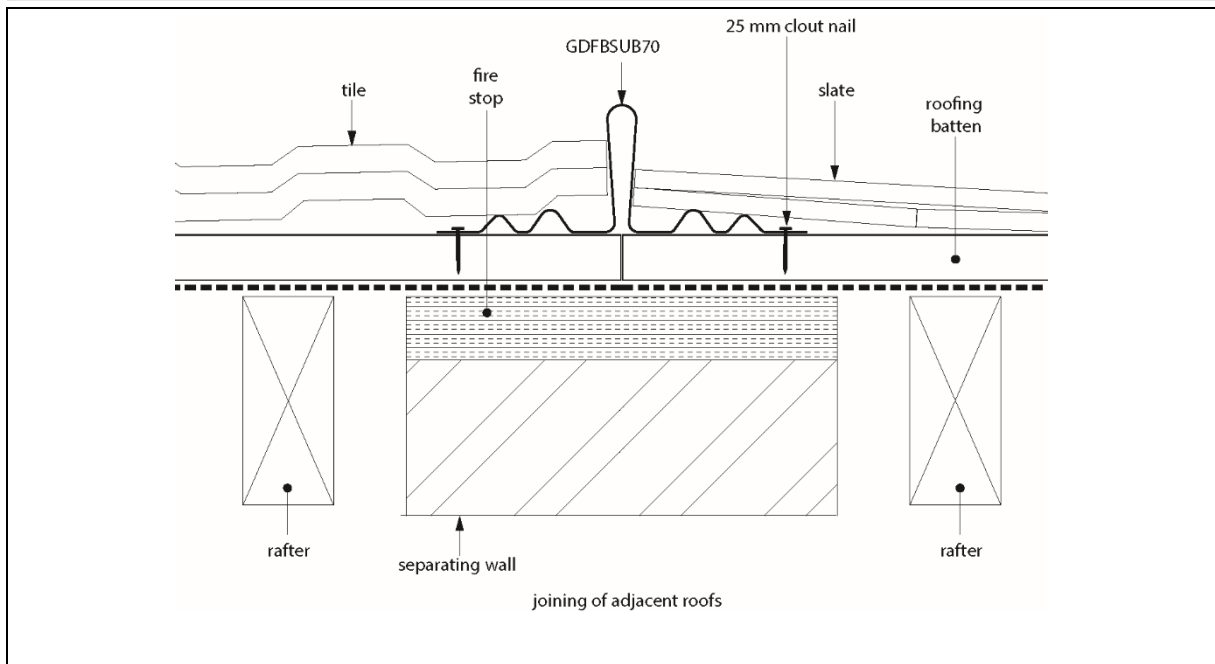
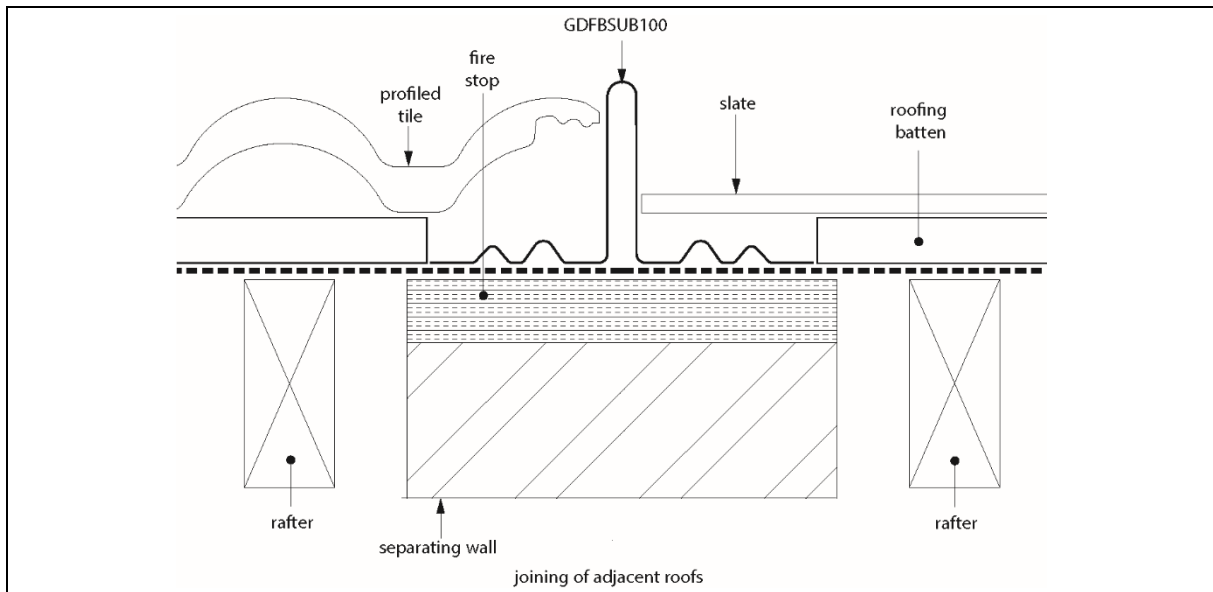


Figure 4 Filon GRP Dry Fix Bonding Strip – GDFBSUB 100 ((for adjoining profiled tile/slate roof applications)



The products have the nominal characteristics given in Table 1.

Table 1 Nominal characteristics of Filon GRP Dry Fix Valley Troughs (GDFBS 70/110 and GDFBSUB 70/100)

| Characteristic (unit) | Components |            |             |           |
|-----------------------|------------|------------|-------------|-----------|
|                       | GDFBS 70   | GDFBSUB 70 | GDFBSUB 100 | GDFBS 110 |
| Length (m)            | 3          | 3          | 3           | 3         |
| Width (mm)            | 225        | 225        | 225         | 225       |
| Depth (mm)            | 70         | 70         | 100         | 110       |
| Colour                | Lead grey  | Lead grey  | Lead grey   | Lead grey |

#### Ancillary items

The Certificate holder recommends the following ancillary items for use with the products, but these materials have not been assessed by the BBA and are outside the scope of this Certificate:

- Filon Tile Support for use with small cut tiles.

#### Applications

The products are intended for use in the following applications:

- GDFBS 70 and GDFVSUB 70 suitable as bonding strips for use as valley troughs in slated pitched roofs
- GDFBS 110, GDFVSUB 70 and GDFVSUB 100 suitable as bonding strips for use as valley troughs in tiled pitched roofs.

#### Definitions for products and applications inspected

Pitched roofs are defined for the purpose of this Certificate as those having a fall in excess of 1:6.

## Product assessment – key factors

The products were assessed for the following key factors, and the outcome of the assessment is shown below. Conclusions relating to the Building Regulations apply to the whole of the UK unless otherwise stated.

### 1 Mechanical resistance and stability

Data were assessed for the following characteristics.

#### 1.1 Strength and stability

1.1.1 Results of strength and stability tests are given in Table 2.

*Table 2 Results of strength and stability tests*

| Product assessed                 | Assessment method  | Requirement           | Result   |
|----------------------------------|--|-----------------------|----------|
| A representative related product | Cross breaking strength to<br>BS 2782 : Part 10 : Method 1005 : 1977<br>– Control        | Value achieved        |          |
|                                  | Flexural strength  |                       | 177 MPa  |
|                                  | Elastic modulus  |                       | 4985 MPa |
| A representative related product | Barcol hardness to<br>BS 2782 : Part 10 : Method 1001 : 1977<br>tested at 23°C and 50%RH | Value achieved        | 46       |
| A representative related product | Hard body impact to<br>MOAT 22 : 1988  | No significant damage | Pass     |
| A representative related product | Tensile strength to<br>BS 2782 : Part 3 : Method 320E : 1976                             | Value achieved        | 93.5 MPa |
| A representative related product | Elongation to<br>BS 2782 : Part 3 : Method 320E : 1976                                   | Value achieved        | 2.6%     |

1.1.2 On the basis of data assessed, Filon GRP Dry Fix Bonding Strips (GDFBS 70/110 and GDFBSUB 70/100) will resist the normal loads and impacts associated with installation and use.

### 2 Safety in case of fire

Data were assessed for the following characteristics.

#### 2.1 External fire spread

2.1.1 When tested to CEN/TS 1187 : 2012, Test 4 and classified to EN 13501-5 : 2016, a representative related product achieved B<sub>ROOF</sub>(t4) for slopes above 10°. <sup>(1)</sup>

(1) Fire test report (No. 20053AJ) and fire classification report (No. 20053AF), issued by Warringtonfire Gent, copies available from the Certificate holder on request.

2.1.2 On the basis of data assessed, the products will be unrestricted by the documents supporting the national Building Regulations with respect to proximity to a relevant boundary.

2.1.3 This classification can be affected by other components of the roof, eg insulation materials, substrates/decking and membranes. These constructions must therefore be evaluated by reference to the requirements of the documents supporting the relevant national Building Regulations and any consequent restrictions imposed by those documents, on a case-by-case basis.

#### 2.2 Reaction to fire

2.2.1 The Certificate holder has not declared a reaction to fire classification for the products to BS EN 13501-1 : 2018.

2.2.2 Designers must refer to the relevant national Building Regulations and guidance for detailed conditions of use, particularly in respect of requirements for substrate fire performance, cavity barriers, service penetrations and combustibility limitations for other materials and components used in the overall construction.

### 3 Hygiene, health and the environment

Data were assessed for the following characteristics.

#### 3.1 Weathertightness

3.1.1 The weathertightness of the products was assessed using test data from representative related products and met the requirement of remaining watertight when subjected to a one metre head of water for 24 hours.

3.1.2 On the basis of data assessed, the products, when completely sealed, will adequately resist the passage of moisture to the inside of the building and so satisfy the relevant requirements of the national Building Regulations.

### 4 Safety and accessibility in use

Not applicable.

### 5 Protection against noise

Not applicable.

### 6 Energy economy and heat retention

Not applicable.

### 7 Sustainable use of natural resources

Not applicable.

### 8 Durability

8.1 The potential mechanisms for degradation and the known performance characteristics of the materials in the products were assessed.

8.2 Specific test data were assessed as shown in Table 3.

*Table 3 Results of durability tests*

| Product assessed                 | Assessment method   | Requirement  | Result |
|----------------------------------|---|--|--------|
| A representative related product | Cross breaking strength to<br>BS 2782 : Part 10 : Method 1005 : 1977                                      | No significant loss of properties following ageing | Pass   |
|                                  | after water immersion for 30 days at 23°C to MOAT 9 : 1973  |  |        |
|                                  | after water boil for 2 hours to MOAT 9 : 1973   |  |        |
|                                  | after heat ageing for 7 days at 70°C to MOAT 9 : 1973   |  |        |
| A representative related product | after UV ageing - 4 hours UV at 50°C, followed by<br>4 hours of condensation at 50°C for 1000 light hours | No significant loss of properties following ageing | Pass   |
|                                  | Barcol hardness to<br>BS 2782 : Part 10 : Method 1001 : 1977  |  |        |
|                                  | after water immersion for 30 days at 23°C to MOAT 9 : 1973  |  |        |
| A representative related product | after water boil for 2 hours to MOAT 9 : 1973   | No significant loss of properties following ageing | Pass   |
|                                  | after heat ageing for 7 days at 70°C to MOAT 9 : 1973   |  |        |

### 8.3 Service life

Under normal service conditions, the products will have a life of at least 20 years, provided it is designed, installed and maintained in accordance with this Certificate and the Certificate holder's instructions.

## PROCESS ASSESSMENT

Information provided by the Certificate holder was assessed for the following factors:

### 9 Design, installation, workmanship and maintenance

#### 9.1 Design

9.1.1 The design process was assessed by the BBA and the following requirements apply to satisfy the performance specified in this Certificate.

9.1.2 The products must be designed in accordance with the relevant parts of BS 5534 : 2014, BS 8000-0 : 2014 and BS 8000-6 : 2023.

#### 9.2 Installation

9.2.1 Installation instructions provided by the Certificate holder were assessed and judged to be appropriate and adequate.

#### **Filon GRP Dry Fix Bonding Strip - GDFBS 70 and GDFBS 110**

9.2.2 Installation of Filon GRP Dry Fix Bonding Strip (GDFBS 70, GDFBS 110 and GDFBSUB 70 and 100) must be in accordance with the Certificate holder's instructions and the relevant recommendations of BS 5534 : 2014, BS 8000-0 : 2014 and BS 8000-6 : 2013.

9.2.3 The end tiles/slates on both roofs must be removed to expose the construction over the separating wall. Fire stopping must be provided above and below the roofing underlay at the top of the separating wall to ensure that fire cannot spread to the adjoining building.

9.2.4 The roofing battens over the joint area of the separating wall are made good and a gap of 185 mm is left, into which the dry fix bonding strip fits. New underlay is inserted into the old, ensuring a sufficient overlap is achieved in accordance with BS 5534 : 2014.

9.2.5 The dry fix bonding strip is positioned in the gap between and on top of the battens over the separating wall. Commencing at the foot, the dry fix bonding strip is fixed using 25 mm clout-headed nails at maximum 500 mm centres onto the roofing battens.

9.2.6 Trimming of the fascia board may be required to ensure full water flow to the gutter.

9.2.7 Consecutive lengths of dry fix bonding strips must be laid dressed to shed water down the slope, allowing a minimum 150 mm overlap (when measured vertically) at the joints.

9.2.8 The use of double slates/tiles is advisable, to eliminate the possibility of small sections requiring fixing.

#### **Filon GRP Dry Fix Bonding Strip - GDFBSUB 70 and 100**

9.2.9 The end tiles/slates on both roofs must be removed to expose the construction over the separating wall. Fire stopping must be provided as required by the documents supporting the national Building Regulations.

9.2.10 The roofing battens over the joint area are made good and new underlay is inserted to replace any that is failing, ensuring a sufficient overlap is achieved as per BS 5534 : 2014.

9.2.11 The dry fix bonding strip is positioned centrally over the separating wall on top of the roofing battens. The side walls of the bonding strip are pressed together to reduce the gap in the peak. Commencing at the foot, the dry fix bonding strip is fixed through the fixing flange using 25 mm clout-headed nails at maximum 500 mm centres onto the roofing battens.

9.2.12 The fascia board may require trimming to ensure full water flow into the gutter.

9.2.13 Consecutive lengths of dry fix bonding strips are laid, dressed to shed water down the slope, allowing a minimum 150 mm vertical overlap at the joints.

9.2.14 The use of double slates/tiles is advisable to eliminate the possibility of small sections requiring fixing.

9.2.15 Slates or tiles must be laid in accordance with the manufacturer's recommendations. They must be close fitted to the peak of the bonding strip and not forced against it.

9.2.16 In some instances, small cut tiles will not be supported by the internal support channel, in which case a Filon Tile support or proprietary stainless steel tile clip may be used.

9.2.17 At the top of the bonding gutter, the assembly is dressed with a Code 4 lead saddle, providing the 150 mm overlap.

### **Finishing**

9.2.18 The roof slating/tiling must be carried out in accordance with the relevant parts of BS 5534 : 2014, BS 8000-0 : 2014 and BS 8000-6 : 2023.

### **9.3 Workmanship**

Practicability of installation was assessed by the BBA, based on the Certificate holder's information and a survey of known users. To achieve the performance described in this Certificate, installation of the products must be carried out by roofers experienced with this type of product.

### **9.4 Maintenance and repair**

9.4.1 Ongoing satisfactory performance of the products in use requires that they are suitably maintained. The guidance provided by the Certificate holder was assessed by the BBA and found to be appropriate and adequate. The following requirements apply in order to satisfy the performance assessed in this Certificate.

9.4.2 As the products are fully or partially confined and have suitable durability, maintenance is not required.

9.4.3 Damaged lengths can be replaced without having to remove adjacent lengths.

## **10 Manufacture**

10.1 The production processes for the products have been assessed, and provide assurance that the quality controls are satisfactory according to the following factors:

10.1.1 The manufacturer has provided documented information on the materials, processes, testing and control factors.

10.1.2 The quality control operated over batches of incoming materials has been assessed and deemed appropriate and adequate.

10.1.3 The quality control procedures and product testing to be undertaken have been assessed and deemed appropriate and adequate.

10.1.4 The process for management of non-conformities has been assessed and deemed appropriate and adequate.

10.1.5 An audit of each production location was undertaken, and it was confirmed that the production process was in accordance with the documented process, and that equipment has been properly tested and calibrated.

† 10.2 The BBA has undertaken to review the above measures on a regular basis through a surveillance process, to verify that the specifications and quality control operated by the manufacturer are being maintained.

## **11 Delivery and site handling**

11.1 The Certificate holder stated that the products are distributed in packs of 10 units, each unit marked with the designated use and the BBA logo.

11.2 Delivery and site handling must be performed in accordance with the Certificate holder's instructions and this Certificate, including:

11.2.1 Packs must be stored flat or on end, on a smooth, clean, dry surface, under cover and protected from sunlight.

Supporting information in this Annex is relevant to the products but has not formed part of the material assessed for the Certificate.

### Construction (Design and Management) Regulations 2015

### Construction (Design and Management) Regulations (Northern Ireland) 2016

Information in this Certificate may assist the client, designer (including Principal Designer) and contractor (including Principal Contractor) to address their obligations under these Regulations.

### Management Systems Certification for production

The management system of the manufacturer has been assessed and registered as meeting the requirements of BS EN ISO 9001 : 2015 and BS EN ISO 14001 : 2015 by ISOQAR (Certificates 10146-QMS-001 and 10146-EMS-001, respectively).

## Bibliography

BS 5534 : 2014 + A2 : 2018 *Slating and tiling for pitched roofs and vertical cladding. Code of practice*

BS 8000-0 : 2014 + A1 : 2024 *Workmanship on construction sites — Introduction and general principles*

BS 8000-6 : 2023 *Workmanship on construction sites — Slating and tiling of roofs and walls. Code of practice*

BS 2782 : Part 10 : Method 1001 : 1977 *Methods of testing plastics. Glass reinforced plastics. Measurement of hardness by means of a Barcol impressor*

BS 2782 : Part 3 : Method 320E : 1976 *Methods of testing plastics — Mechanical properties — Tensile strength, elongation and elastic modulus*

BS 2782 : Part 10 : Method 1005 : 1977 *Methods of testing plastics. Glass reinforced plastics. Determination of flexural properties. Three point method*

BS EN ISO 9001 : 2015 *Quality management systems — Requirements*

BS EN ISO 14001 : 2015 *Environmental management systems — Requirements with guidance for use*

BS EN 13501-1 : 2018 *Fire classification of construction products and building elements — Classification using data from reaction to fire tests*

EN 13501-5 : 2016 *Fire classification of construction products and building elements — Classification using data from external fire exposure to roof tests*

CEN/TS 1187 : 2012 *Test methods for external fire exposure to roofs*

MOAT 9 : 1973 *Directive for the Assessment of Products in Glass-Reinforced Polyester for use in Building.*

MOAT 22 : 1988 *UEATc directives for the assessment of external insulation systems for walls (Expanded Polystyrene Insulation Faced with a Thin Rendering)*

## Conditions of Certificate

### Conditions

1 This Certificate:

- relates only to the product that is named and described on the front page
- is issued only to the company, firm, organisation or person named on the front page – no other company, firm, organisation or person may hold or claim that this Certificate has been issued to them
- is valid only within the UK
- has to be read, considered and used as a whole document – it may be misleading and will be incomplete to be selective
- is copyright of the BBA
- is subject to English Law.

2 Publications, documents, specifications, legislation, regulations, standards and the like referenced in this Certificate are those that were current and/or deemed relevant by the BBA at the date of issue or reissue of this Certificate.

3 This Certificate will be displayed on the BBA website, and the Certificate Holder is entitled to use the Certificate and Certificate logo, provided that the product and its manufacture and/or fabrication, including all related and relevant parts and processes thereof:

- are maintained at or above the levels which have been assessed and found to be satisfactory by the BBA
- continue to be checked as and when deemed appropriate by the BBA under arrangements that it will determine
- are reviewed by the BBA as and when it considers appropriate.

4 The BBA has used due skill, care and diligence in preparing this Certificate, but no warranty is provided.

5 In issuing this Certificate the BBA is not responsible and is excluded from any liability to any company, firm, organisation or person, for any matters arising directly or indirectly from:

- the presence or absence of any patent, intellectual property or similar rights subsisting in the product or any other product
- the right of the Certificate holder to manufacture, supply, install, maintain or market the product
- actual installations of the product, including their nature, design, methods, performance, workmanship and maintenance
- any works and constructions in which the product is installed, including their nature, design, methods, performance, workmanship and maintenance
- any loss or damage, including personal injury, howsoever caused by the product, including its manufacture, supply, installation, use, maintenance and removal
- any claims by the manufacturer relating to UKCA marking and CE marking.

6 Any information relating to the manufacture, supply, installation, use, maintenance and removal of this product which is contained or referred to in this Certificate is the minimum required to be met when the product is manufactured, supplied, installed, used, maintained and removed. It does not purport in any way to restate the requirements of the Health and Safety at Work etc. Act 1974, or of any other statutory, common law or other duty which may exist at the date of issue or reissue of this Certificate; nor is conformity with such information to be taken as satisfying the requirements of the 1974 Act or of any statutory, common law or other duty of care.

### British Board of Agrément

1<sup>st</sup> Floor, Building 3, Hatters Lane  
Croxley Park, Watford  
Herts WD18 8YG

©2024

tel: 01923 665300  
clientservices@bbacerts.co.uk  
[www.bbacerts.co.uk](http://www.bbacerts.co.uk)