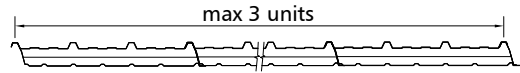


Filon Products Limited

UNIT 3 RING ROAD, ZONE 2 BURNTWOOD BUSINESS PARK
 BURNTWOOD, STAFFORDSHIRE, ENGLAND WS7 3JQ
 Tel 01543 687300 Fax 01543 687303
 sales@filon.co.uk www.filon.co.uk

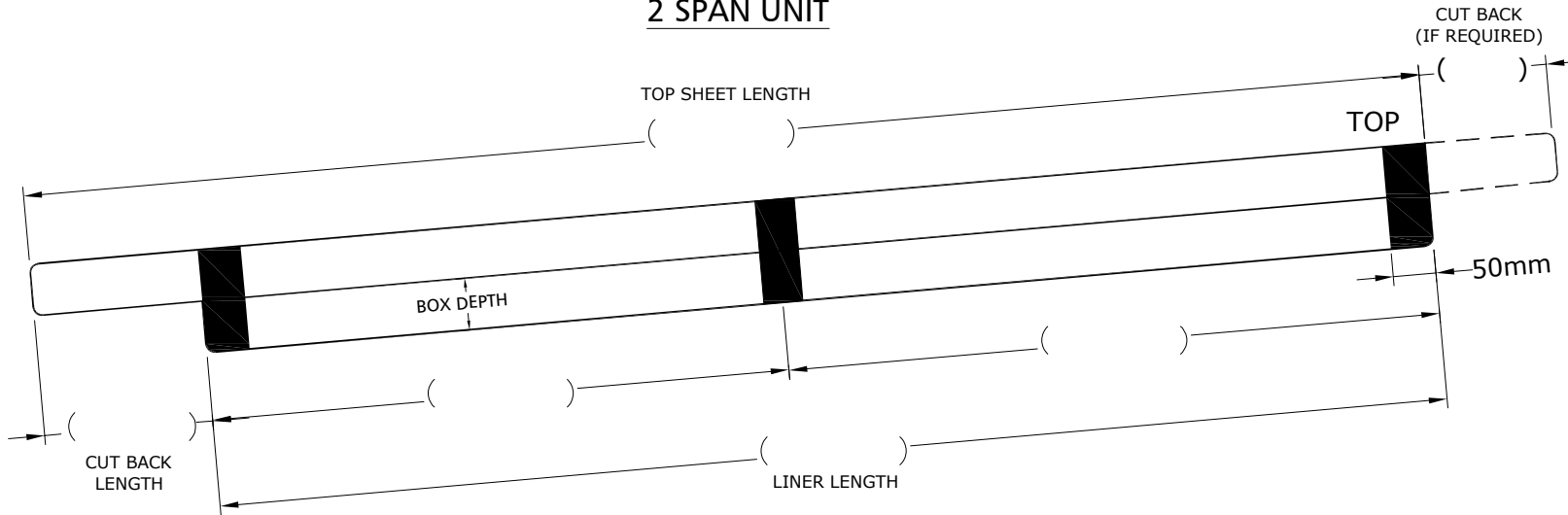
CUSTOMER ORDER FORM FOR FACTORY ASSEMBLED INSULATED ROOFLIGHTS (FAIRs)



DUE TO MANUFACTURING TOLERANCES WE DO NOT RECOMMEND THAT MORE THAN THREE FAIRS ARE FITTED IN A CONTINUOUS RUN ACROSS THE ROOF WIDTH

All prices include standard 50mm wide filler blocks, wider filler blocks are available at an additional cost. When calculating number of spans required, please consider that all units must have a filler block either end of the unit (this acts as an end closure).

2 SPAN UNIT



COMPOSITE SYSTEM PROFILE:	
BOX DEPTH REQ'D:	
QTY REQ'D LEFT TO RIGHT LAY:	
QTY REQ'D RIGHT TO LEFT LAY:	

Please note that we strongly advise against ordering units over 8500mm in length due to handling and logistical issues.

*For information relating to expected non-fragility periods & Rooflight U values please refer to Filon Technical Data Sheets which are available from our Sales Office & website by visiting: www.filon.co.uk

PLEASE NOTE THAT ALL FILON MK3 FAIRS TO SUIT COMPOSITE PANELS ARE FITTED WITH METAL UNDERLAP STRIPS AS STANDARD

PLEASE TICK REQUIRED NON-FRAGILITY

*TOP SHEET WEIGHT	
CE24E OUTER SHEET: (minimum weight) Class B to ACR[M]001 (up to 2m span) when new	
CEDR24E OUTER SHEET: Class B to ACR[M]001 (up to 2m span) for 25 years	
CE30E OUTER SHEET: Class B to ACR[M]001 (up to 2m span) for 25 years	
CEDR30E OUTER SHEET: Class B to ACR[M]001 (up to 2.5m span) for 25 years	
CE36E OUTER SHEET: Class B to ACR[M]001 (up to 2.5m span) for 25 years	
SupasafeE OUTER SHEET: Class B to ACR[M]001 for 30 years	

PLEASE TICK REQUIRED U VALUE

*U VALUE	
DOUBLE SKIN - 3.0 W/m ² K : NOT PART L COMPLIANT	
TRIPLE SKIN - STD CONFIGURATION - 1.9 W/m ² K :	
TRIPLE SKIN - 1.7 W/m ² K :	
TRIPLE SKIN - 1.3 W/m ² K :	
OTHER : Please specify U Value req'd	

CUSTOMER NAME:		DATE:	
ORDER NO. :		NAME:	
SPECIAL INSTRUCTIONS:			
DELIVERY ADDRESS:		TOTAL TOP SHEET METREAGE	
		TOTAL LINER METREAGE	